

Android APK user guide

Version 2.0



1. App Installation

(Notes : Ensure phone's network connection is success when using the app)

1.1 Download path

Method 1: Find the paper disk which comes with product, visit the link on the disk.

Method 2: Search "YIPC" on Google Play ,find the app and install.

1.2 Enable App



WOO
FALCON
CAMARA WI-FI IP

1.3 Add camera:

Method 1: "Click "Add New Camera " on App main interface to access "Add Camera" interface. Click "Search", App will find the online cameras which in same LAN with the phone. Select the camera ,input password and click "Done" to finish.

Method 2: Click the "Scan QR Code" on "Add Camera" interface to scan. the QR code which on the UID lable,input password and click "Done" to Finish.

Method 3: Input the UID on "Cam ID" text box and default password directly,click "Done" to finish..

Note: The default password of camera's user name is 12345

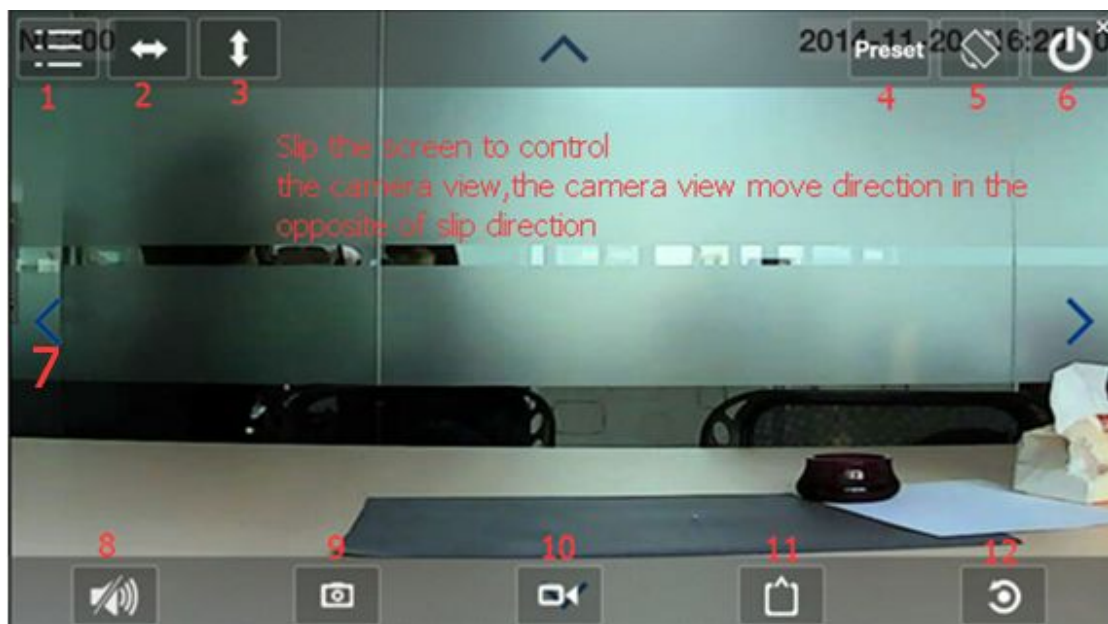
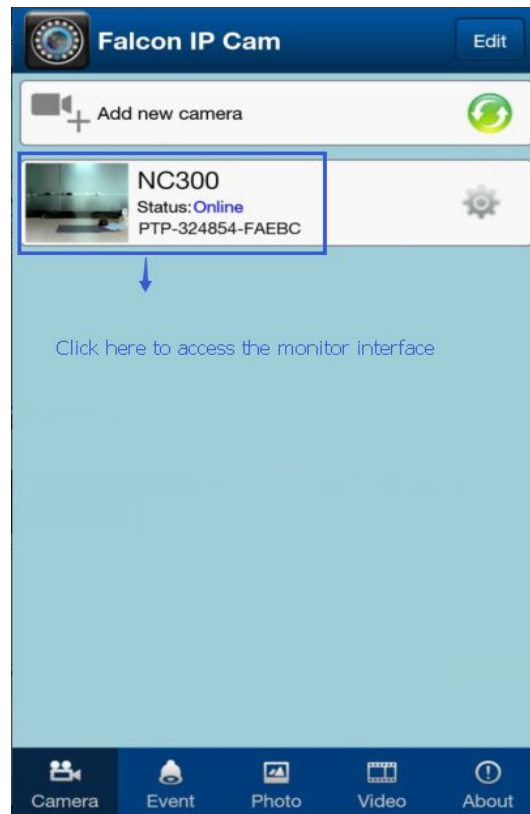


Method 3: Input the UID and Password directly


Method 2

Method 1


4. Monitoring Interface.




(1) This button includes 6 icon buttons


Horizontally 

vertically 

Color Saturation 

Enable input alarm 

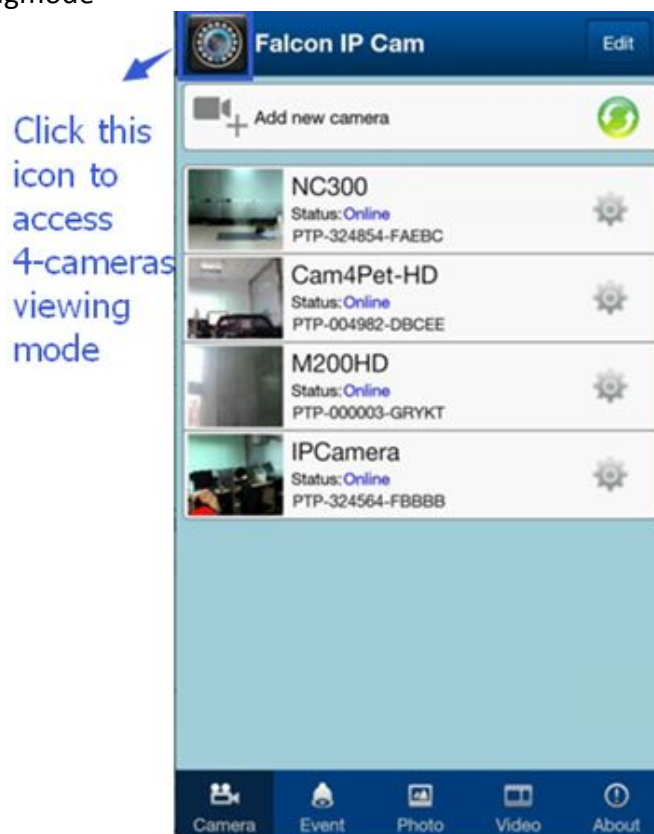
Contrast 

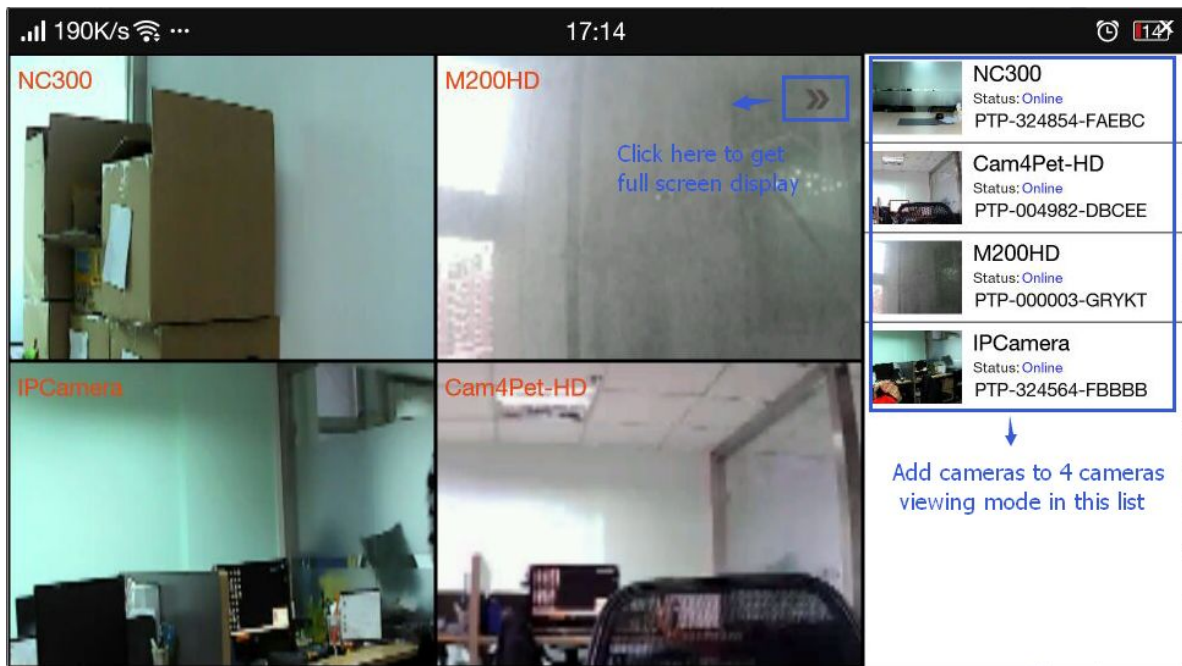
Disable input alarm 

- (2) Cruising Horizontally
- (3) Cruising Vertically
- (4) Preset positions setting
- (5) Enable/Disable full screen display
- (6) Close monitoring interface
- (7) Arrows:Click :Camera view moves as same as the arrows direction
- (8) Enable/Disable Audio
- (9) Photo
- (10) Recording
- (11) Video quality/resolution setting
- (12) Reset video settings to factory default

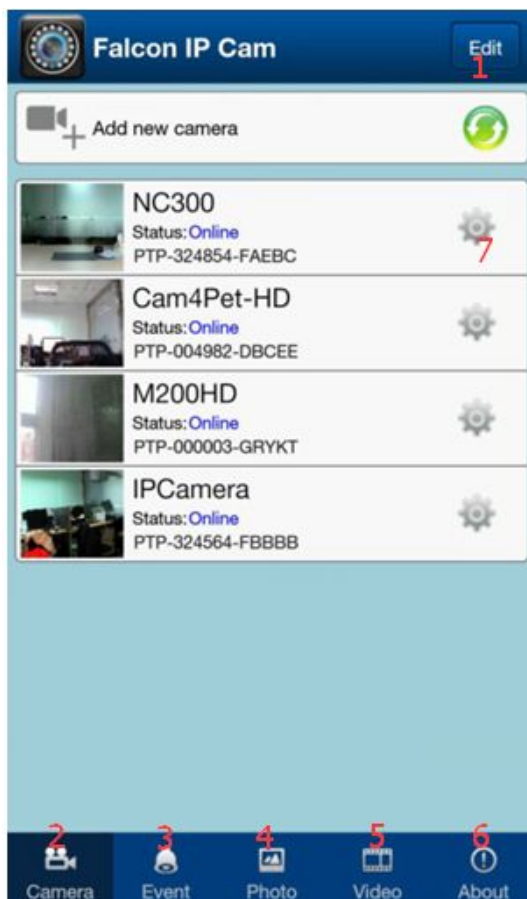
Tips:Turn down the resolution of video to make the video streaming smoothly in bad network condition.

5. Four-cameras viewingmode





6. Main interface functional settings



1, Edit the camera which on camera list, you can delete the camera from camera list or retry the password or user name when it says "wrong"

2, Camera: When you in other page, click this to back to the main interface with camera list.

3, Event: Display the alarm logs

4, Photo: check the recorded photos

5, Video: Check the record videos

6 About: information about this application.

7, Click to access camera setting interface.

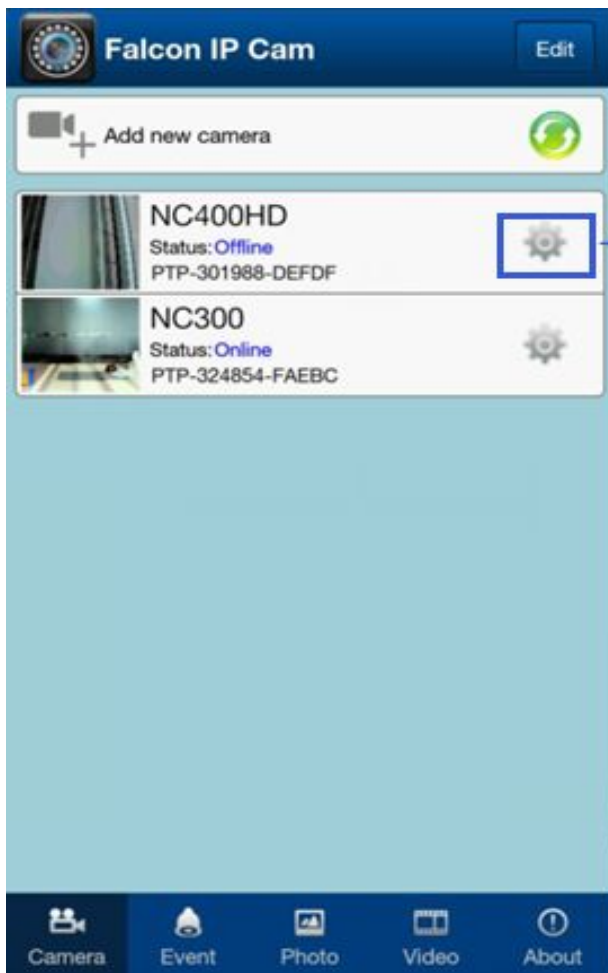
7. Remote videos watch



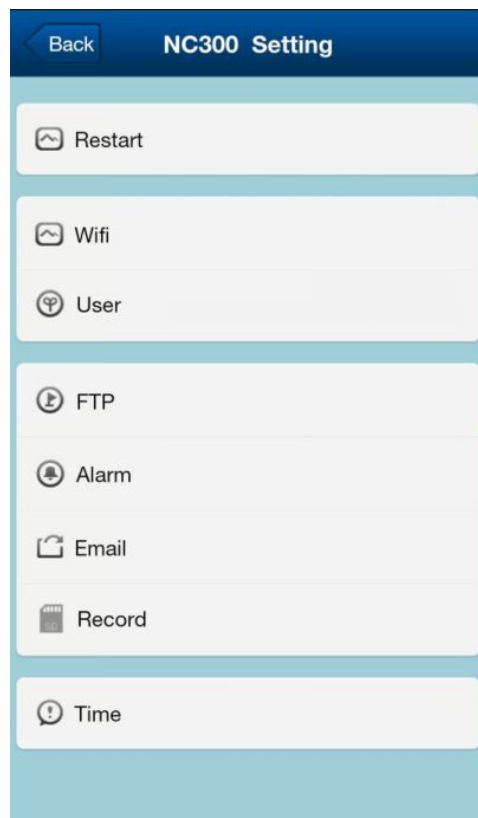
In "Videos" Interface, you can choose "Remote" to check the videos which recorded on the camera's SD Card.

The video's format is avi, you have to use the video player which support avi.

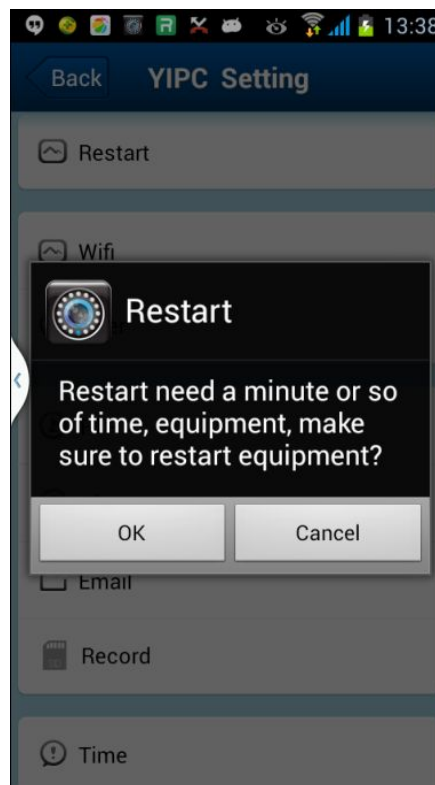
8. Camera settings



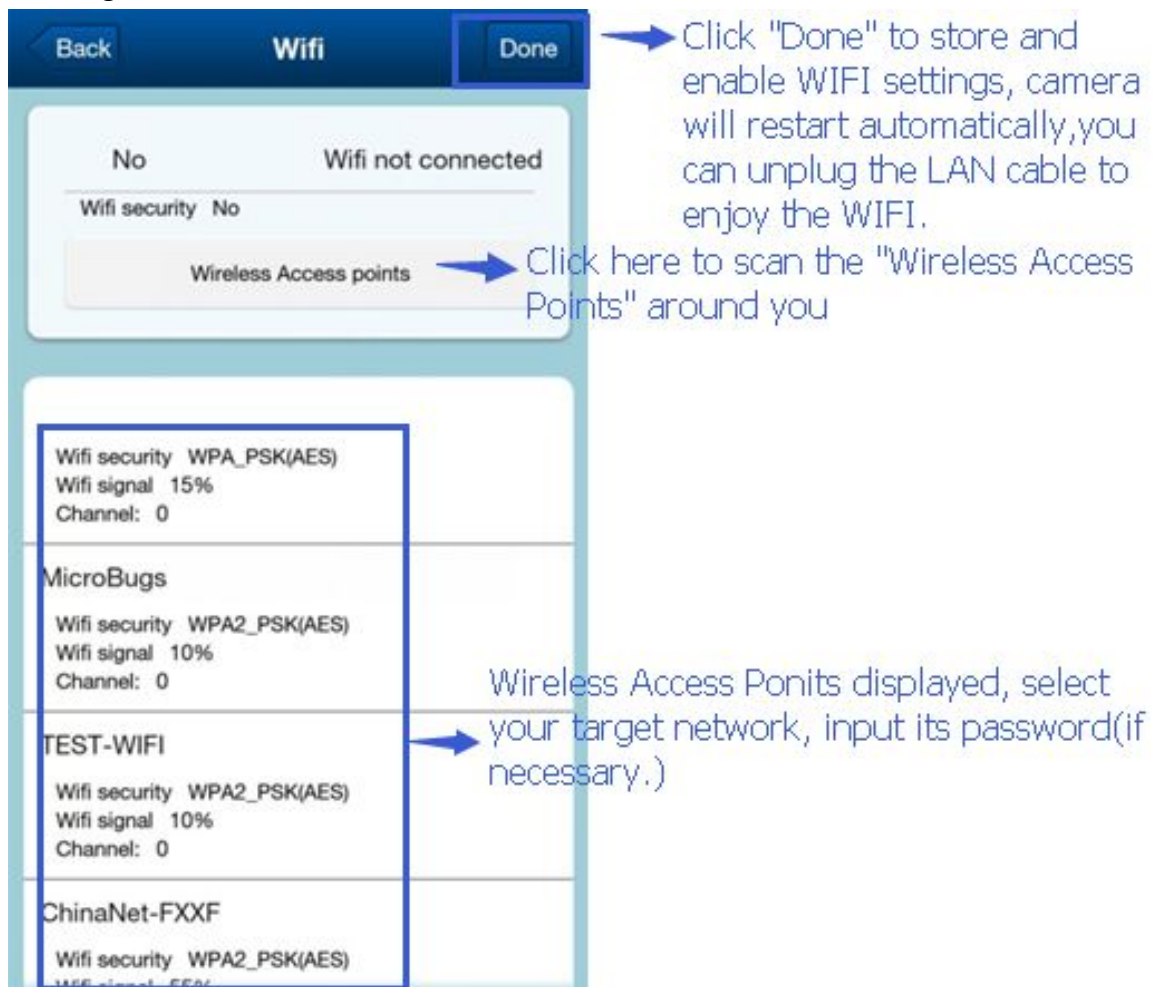
Click this icon to access camera setting interface.



8.1 Restart



8.2 WIFI setting



8.3 User setting

Back User Done

Administrator
User: admin
Password: ●●●●●
 Show password

Operator
User: _____
Password: _____
 Show password

Visitor
User: _____
Password: _____

Click "Done" to store and enable all settings.

Input the user name and password that you need among three types of account.

8.4 Alarm Setting



Sensibility set, the smaller number ,the higher sensibility.

Set the preset location alarm, support 16 preset in total.

Enable: Camera will send email notification when alarm (Email setting beforehand is necessary)

Enable: Camera will start to record automatically.

Enable/Disable alarm sound.

8.5 Email Setting

The screenshot shows an Android 'Email' settings screen. At the top, there is a 'Back' button on the left and a 'Done' button on the right. The 'Done' button is circled in red. Below the header, there are several input fields and checkboxes:

- Sender:** yelow905@gmail.com
- SMTP server:** smtp.gmail.com (with a dropdown arrow icon)
- SMTP port:** 465
- Verify:**
- SSL:** NONE (with a dropdown arrow icon)
- SMTP user:** yelow905@gmail.com
- SMTP password:** [masked with dots]
- Receiver email address 1:** [empty field]
- Receiver email address 2:** [empty field]
- Receiver email address 3:** [empty field]
- Receiver email address 4:** [empty field]

Blue arrows point from the text annotations to the corresponding fields in the screenshot.

Click "Done" to store and enable all settings at the end .

Input the email that you want to use for send alarm notification.

Input the SMTP server of your send email ,or you can click the icon to choose.

Input the SMTP port of your sender email

Enable

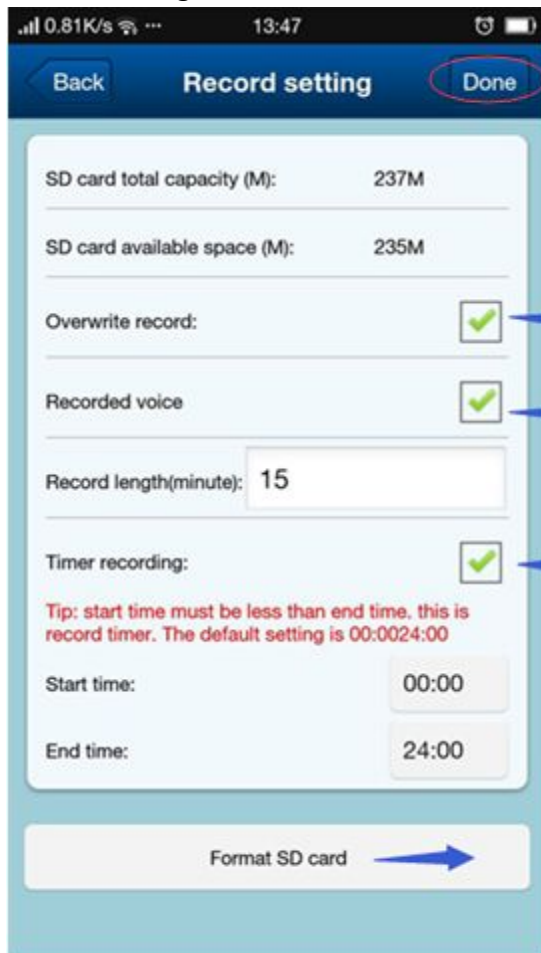
Choose it decide by your sender email.

Input the sender email again

Input the password of your sender email.

Set the receiver email address, you can set 4 in total

8.6 Record Setting



Do not forget click "Done" to save and enable all settings in the end.

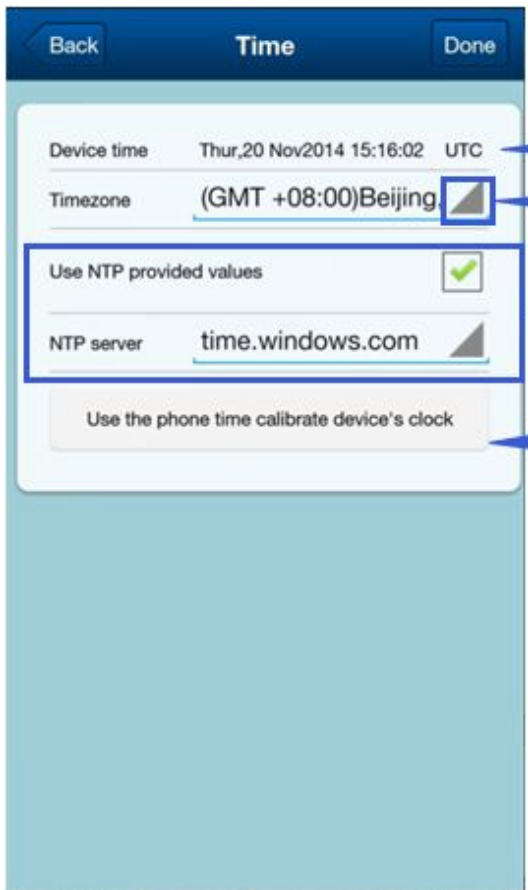
Enable: Camera will overwrite record when camera's capacity is full.

Enable: Recorded videos will comes with voice.

Enable: you can set "Start time" to "End time" for timer recording, Camera will start recording automatically during this period.

It's better to format the SD Card before record. Once done ,all dates on the sd card will be cleaned up.

8.7 Time Setting



The screenshot shows the 'Time' settings screen with the following elements and annotations:

- Device time:** Thur, 20 Nov 2014 15:16:02 UTC. An arrow points to this field with the text: "Display the recent time of the camera".
- Timezone:** (GMT +08:00)Beijing. An arrow points to the dropdown arrow on the right with the text: "Select the TimeZone".
- Use NTP provided values:** A checkbox that is checked with a green checkmark. An arrow points to this checkbox with the text: "NTP Time values setting, camera will get the time value from the server once settings done."
- NTP server:** time.windows.com. An arrow points to the dropdown arrow on the right.
- Use the phone time calibrate device's clock:** A button at the bottom. An arrow points to this button with the text: "Sync the camera's time to the phone".